

NZDA Auckland Branch Range Standing Orders

1. NZDA Auckland Branch Riverhead Range
2. Range Name
 - a) NZDA Auckland Branch Riverhead Range
3. These RSOs dated Wednesday, 7 June 2023

4. Introduction

- a) The shooting complex is contained within the Riverhead Forest, having 25m, 100m and 200m ranges catering for Rifle, Shotgun, Pistol and miniature black powder cannons. The range is accessed via locked gates at the forest entrance on Forestry Rd, Riverhead.
- b) The legal title is Lot 1 DP 138520 NA100A/2 1688.50ha. The range complex is located in the Riverhead Forrest off Forestry Road/Deacon Road. NZTM Reference: E1741580 N5933599
- c) Matariki Forests
- d) Hours of operation - The range will be open between the hours of 8.30 am to 6 pm on designated shooting days.

5. Responsibilities

- a) NZDA Auckland Branch Committee
- b) The Range Convener, as elected at the Annual General Meeting or appointed by the NZDA Auckland Branch Committee.

6. Compliance with RSOs

- a) All users must read and comply with these RSOs
- b) Non-compliance with these RSOs could lead to exclusion from the range complex until the Range Convener is satisfied that the non-compliant user or group has completed necessary training and made an undertaking to comply. Any approved user group that fails to comply with these RSOs will have their approval withdrawn.

7. Range location

- a) The range complex is located in the Riverhead Forrest off Forestry Road/Deacon Road.
- b) Topo 50 Map No. BA 31 NZTM Reference: E1741580 N5933599

8. Approved range users and priority of use

- a) NZDA Auckland Branch
 - b) Omni target Club
 - c) Antique Arms Auckland Branch.
- 8.c.1. The designated user of any range has sole use of that range for the allotted time period.

9. Warning flags – Danger signs

- a) Red range flags MUST be positioned at the following points and are to be hoisted prior to commencement of any live firing:

9.a.1. Main Road Gate entrance: Flag and Sign at NZTM Grid E1741551 N5933441

9.a.2. Flag at firing point of range that is in use.

9.a.3. Danger signs are located at: (see Annex B)

9.a.3.1. Cnr Wattle & Weir E1741319 N5933145

9.a.3.2. Cnr Wattle & Longbush Rd E1752089 N5933074

9.a.3.3. Opposite cnr Yelavich & Longbush E1742143 N5933409

9.a.3.4. Cnr Blake & Longbush E1742070 N5933580

9.a.3.5. Cnr Trig & Longbush E1741817 N5934750

9.a.3.6. Cnr Blake & Barlow E1741928 N5934394

9.a.3.7. Cnr Trev & Barlow E1740972 N5933882

10. Description of individual ranges restrictions and conditions of use

- a) The complex has two (2) ranges.

b) Range 1: 25m Multi discipline Outdoor No Danger Area Range.

- Pistols up to and including .50 Calibre with a maximum muzzle velocity under 1600fps.
- Rifles up to and including 8mm with a maximum muzzle energy under 3250Ft-Lbs
- Black Powder firearms firing lead projectiles up to and including .75 calibre with a maximum muzzle velocity under 2000fps.
- Shotguns up to and including 10 gauge with a maximum velocity under 2000fps.

Conditions of Use Range 1:

- Targets for pistol may be placed at the left-hand side backstop.
- Any targets that are placed up range must have a mobile bullet catcher.

c) Range 2: 200m Multi discipline Outdoor Reduced Danger Area Range.

- Pistols up to and including .50 Calibre with a maximum muzzle velocity under 1600fps.
- Rifles up to and including 8mm with a maximum muzzle energy under 3250Ft-Lbs
- Rifles over 8mm up to and including 338 with a maximum muzzle energy under 5500Ft-Lbs.
- Black Powder firearms firing lead projectiles up to and including .75 calibre with a maximum muzzle velocity under 2000fps.
- Shotguns up to and including 10 gauge with a maximum velocity under 2000fps.
- Black powder Cannons and mortars up to and including 50mm with a muzzle velocity under 2000fps.

Conditions of Use Range 2:

- All shooters must be able to stay within the cone of fire for this range. Before using the 100-metre firing point, the shooter must have qualified on range 1.
- Before using the 200-metre firing point the shooter must have qualified at 100 metres.
- 50 Metre target line is only to be engaged with low velocity ammunition under 2000fps. (Rimfire, pistol calibre rifles, black powder rifles)
- Pistols are only to be used from the 25-metre firing line forward.
- Shooting into the right hand-side backstop is for pistol matches only.
- Rifles over 8 mm and up to and including 338 Lapua must be used from a bench rest only under the following conditions with the prior approval of the range committee.
On the two left-hand side benchrests, must be shot from a sitting position only using a bench rest. The bolt must only be closed on a round when the rifle is in the shoulder and the rifle is pointed at the target.
- All high velocity firearms are to be used only from the 100 and 200 metre firing mounds.
- Low velocity firearms may be used on the floor of the range with the approval of the range committee.

- The target centre height must be at 1200mm to centre off the floor of the range at 200m.

11. Range safety roles

- a) The NZDA Auckland Branch Committee approves all activity at the range complex
 - 11.a.1. The committee appoints the Range Convener.
- b) The following person(s) will be required at any live shoot on each range in operation.
 - 11.b.1. Qualified Range Officer.
 - 11.b.2. Any other Range/Safety Officer as required by User organisation or match rules.

12. Range Safety Rules

- a) Safety on the range is the responsibility of all range users.
- b) The Duty Range Officer is responsible for ensuring that the range is safe prior to use.
 - 12.b.1. That the bullet catchers are in good repair.
 - 12.b.2. That the targets are approved for use on the range.
 - 12.b.3. That ammunition restrictions are adhered to.
 - 12.b.4. That there is no activity in the danger area.
 - 12.b.5. That hearing protection is used by all range users and spectators.
- c) General Restrictions:
 - 12.c.1. No smoking within the forest area.
 - 12.c.2. Access into the forest is via Forestry Road at designated assembly times.
 - 12.c.3. All drivers must proceed directly to or from the range area, with headlights on and keeping below a maximum speed of 30 km/h. Under no circumstances can a driver deviate into the rest of the forest.
 - 12.c.4. No lighting of fires.
 - 12.c.5. All shooting personnel will sign in and present current firearms licence before shooting.
 - 12.c.6. All targets are to be placed as close as possible to the approved backstop to reduce the possibility of ricochet.
 - 12.c.7. No firearms that have had alterations or modifications made to them that makes them illegal or unsafe may be used on these ranges at any time.
 - 12.c.8. No Firearms that are held against a "C" or "P" Category firearms Licence may be used on these ranges at any time.
 - 12.c.9. No Prohibited ammunition to be used e.g., steel core, tracer or incendiary.

13. New ammunition

If a new ammunition calibre is proposed for use on the range, it must be approved by the SRO before inclusion in RSOs. Police must be notified of any proposed amendment to RSOs for review of the current conditions of certification and approval.

14. Targets

- a) Only targets approved by the Auckland Deerstalkers Committee and Pistol NZ are permitted to be used on club ranges.
- b) Aerial targets can only be used for clay bird shooting with approved shotguns using cartridges designed for clay target shooting.
- c) The Range Officer officiating ensures that the target system is set so that no projectiles can escape the approved NZDA Auckland Branch range template or the approved cone of fire for the target or targets.
- d) Standard height for soft targets is 1.2 metres to the centre off the floor of the range. All targets should be placed close to the bullet catcher or mobile bullet catchers are to be used.
- e) New target types must be approved by the NZDA Auckland Branch Committee.

15. Steel plate targets

- a) In general, steel targets are not to be used with centrefire rifles.

- b) Rifles using approved pistol calibres may be used on steel targets during Omni Target Club managed events as per Pistol NZ guidelines. (Refer PNZ Steel target safe use guide)
- c) ONLY Approved steel plate targets may be used on the NZDA Auckland Branch Ranges.
- d) All steel targets to be approved by the Range Convener prior to use.
- e) All non-reactive steel plate targets to be set at a forward sloping angle of 15 Degrees from the vertical to reduce the possibility of ricochets.
- f) Shrouds are to be used on ranges where steel targets are placed more than 1 metre from the backstop/bullet catcher.

16. Moving targets

- a) No moving targets (e.g., running boar) are to be used at this complex.

17. Minimum safe engagement distances

- a) The MINIMUM distance permitted for engaging a steel target with a pistol is as list in competition rules and the PNZ Steel target safe use guide:
 - 7 metres IPSC Handgun.
 - 7 metres IPSC Pistol Carbine/IPSC Mini Rifle.
 - 50 metres IPSC Rifle.
 - 8 metres IPSC Shotgun (Birdshot & Buckshot)
 - 50 metres IPSC Shotgun (Lead solids slugs).
 - 5 metres CAS Pistol.
 - 7 metres CAS Shotgun.
 - 13 metres CAS Rifle.
 - 10 metres NRA pistol.
- Under no circumstances are shotguns using steel shot to be used on steel plate targets.
- Ground splashback distance for pistol. 5 metres.
Ground splashback distance for high velocity rifle 15 metres.

18. Eye and hearing protection

a) Hearing protection

18.a.1. Hearing protection must be of the type that fully covers the ear (earmuffs) and meet a minimum of Class 5 as defined in AS/NZS 1270:2002. Ear plugs are not acceptable unless worn in conjunction with Class 5 earmuffs.

18.a.2. Hearing protection must be worn by all present at a range while it is in operation.

b) Eye Protection

18.b.1. Eye protection is recommended, but not required for NZDA shooting or for the antique arms Association events but highly recommended when shooting black powder firearms.

18.b.2. Eye protection is required for all shooters and spectators at Omni Pistol club events, as per Pistol NZ Regulations.

19. Medical and Emergency

- a) First Aid facilities are available in the First aid box in the range building during events.
- b) In Emergency drive to top of hill to get cell phone signal and dial 111.
- c) The range complex is located in Riverhead Forrest off Forestry Road/Deacon Road. NZTM Reference: E1741580 N5933599

20. Accident/Incident procedure

- a) Procedure in case of an accident /incident on the range not involving a firearm or ammunition
 - 20.a.1. Cease Firing
 - 20.a.2. Ensure all firearms are unloaded and safe.
 - 20.a.3. Render first aid or evacuate the injured to the nearest medical facility.

- 20.a.4. In Emergency drive to top of hill to get cell phone signal and dial 111. Take the NZTM grid reference with you to give the range location.
- 20.a.5. If Pistol Club member advise NZPA Executive Officer.
- 20.a.6. Advise the NZDA Auckland Branch Club President or Vice President.
- b) Procedure in case of an accident /incident on the range involving a firearm or ammunition
 - 20.b.1. Cease Firing
 - 20.b.2. Ensure all other firearms are unloaded and safe.
 - 20.b.3. Render first aid or evacuate the injured to the nearest medical facility.
 - 20.b.4. Seal off the area
 - 20.b.5. Make no attempt to remove or strip the firearm
 - 20.b.6. Advise the Police.
 - 20.b.7. If Pistol Club member advise NZPA Executive Officer.
 - 20.b.8. Advise the NZDA Auckland Branch Club President or Vice President.

21. Fire precautions and procedures

- a) In the case of fire.
 - 21.a.1. Cease fire
 - 21.a.2. Make sure all firearms are safe
 - 21.a.3. Remove firearms to vehicles
 - 21.a.4. Exit range to nearest safe forest gate – Note this may not be the usual entry point.
As soon as a cell phone signal is available Dial 111 to ask for Fire Brigade Assistance. Address: The range complex is located in Riverhead Forrest off Forestry Road/Deacon Road.
NZTM Reference: E1741580 N5933599
- b) The following fire equipment shall be on site during events.
 - 21.b.1. Fire extinguisher (2kg dry powder).
 - 21.b.2. Fire blankets x 2.
- c) No Fires are to be lit in the area. No smoking or vaping in the forest.
- d) All precautions are to be taken to reduce the possibility of fire in buildings and the surrounding grounds.
- e) All reasonable precautions are to be taken against fire and all fires are to be extinguished as quickly as possible.

22. Range clearance

- a) All users are to ensure that all range rubbish including ammunition boxes, cases and shotgun wads etc., are removed from the range and placed in the rubbish bin.
- b) Used targets are removed from the range and stored in the appropriate place. No rubbish is to be left on the range.
- c) All range status signs must be closed, and flags lowered.
- d) Gates at the entrance to be secured as found.
- e) Any damage or concern to be reported to the Duty Range Officer.

23. Unauthorised access and/or use of the range

- a) Any Individual or organisation given use of the Range Complex will have been provided with written authority from the NZDA Auckland Branch. Any individual or Organisation unable to provide this approval as proof of authority must be asked to leave the property immediately. Any refusal to leave should be reported to the Police as soon as possible

24. Cone(s) of Fire (Coff)

- a) Cone of Fire Rifle:
 - 24.a.1. For the 100m firing line, the Rifle Cone of Fire is 1.125 degrees, (20mils)
 - 24.a.2. At 20 metres 393mm radius (785mm dia).
 - 24.a.3. At 25 metres 491 mm radius (981mm dia).
 - 24.a.4. At 35 metres 687 mm radius (1374 mm dia).

- 24.a.5. At 50 metres 981mm radius (1963mm dia).
- 24.a.6. At 100 metres 1963mm radius (3926mm dia).
- 24.a.7. For the 200m firing line the CofF is 10mils 1963mm radius (3926mm dia).
- b) Cone of Fire Pistol:
 - 24.b.1. The Pistol Cone of Fire for this range is 1.3 degrees, (23mils).
 - 24.b.2. At 20 metres 454mm radius (907mm dia).
 - 24.b.3. At 25 metres 567mm radius (1134mm dia).

25. Inability to achieve CofF

- a) If for any reason any shots fired fall outside the Cone of Fire the following procedure is to occur. The Range Officer is to:
 - 25.a.1. Halt all firing and identify the shooter responsible.
 - 25.a.2. Observe that shooter's next shot and if it falls within the Cone of Fire allow that shooter to continue firing.
 - 25.a.3. If the observed shot does not fall within the Cone of Fire, the shooter is to be provided with a suitable coach with the intention of bringing the spread of the next five shots to within the Cone of Fire.
 - 25.a.4. Shooters who are unable to achieve the Cone of Fire within the five shots are to be prevented from further firing. Shooters prevented from firing in this way may resume firing following the completion of a club approved training program with the firearm.

26. Un-licenced or inexperienced shooters and test firing

- a) Any unlicensed trainee or shooter under supervision is to wear a yellow hi vis vest.
- b) Supervised shooters must have their supervisor within arm's length while shooting.
- c) Un-licenced or inexperienced shooters must qualify Range 1 (25m) before being allowed to shoot on range 2, 100m firing line

27. Test Firing

- a) Test firing of new rifles must be performed on Range 1 (25m) and can only be used on Range 2 once sighted in.
- b) Rifles fitted with new sighting systems (Scopes etc) must be test fired on Range 1 (25) until sighted in.

28. Air Danger Height (ADH)

- a) An air danger height of 300 metres applies to the NZDA Auckland Branch range complex.
- b) If aircraft are seen to be approaching the club in a manner that may see them fly over the club property whilst live firing is in progress, the DUTY RANGE OFFICER must immediately call for a stop to all shooting until the aircraft clears the area.

29. Range maintenance plan

- a) Refer document "Range maintenance plan".

30. Children (Minors)

- a) All children are to be under the direct supervision of an adult at all times.
- b) If a minor is shooting, they must be under the direct supervision of an adult with a firearms licence.

31. Health and hygiene

- a) Using firearms can cause lead contamination. Wash hands before consuming food or drink. Lead contaminants will be present at the backstop / bullet catcher. Do not enter or handle the bullet catcher material unless appropriate personal protective equipment is in use.

32. Domestic animals

- a) Domestic animals are not to enter the range complex.

32.a.1. If a domestic animal e.g. pig dog, enters the range, all shooting must cease until the animal has either been secured or removed from the area.

33. Specific safety rules for the use of the range/range complex

a) THE FOLLOWING SAFETY RULES ARE EMPHASISED.

33.a.1. When a Range is in use it shall at all times be under the control of a Range Officer, whose authority is absolute and all persons on the Range shall act under his or her direction.

33.a.2. The Range Officer shall be responsible for the observance of these rules and for the reporting of any breach to the Club Committee without delay.

33.a.3. Firearms are not to be handled unless under the control of a Range Officer or in an approved and designated Safety Zone.

33.a.4. Loaded firearms must be pointed down-range at all times.

33.a.5. Do not leave firearms unattended at any time.

33.a.6. Firearms that are not your own are not to be touched without owner's consent.

33.a.7. Firearms are not to be loaded unless under the direct control of a Range Officer.

33.a.8. Firearms are not to be handled while people are forward of the firing line.

33.a.9. No firearm may be removed from the firing point until it has been checked and verified by the Range Officer as being clear.

b) Omni Target Club

33.b.1. No pistol shooting shall take place on the range except under the control of Omni Target Club and a Range Officer holding the appropriate Pistol Range Officer qualification.

33.b.2. Pistols are not to be placed loaded in a holster unless the shooter is holster qualified and then only under the direction of a qualified Range Officer.

33.b.3. All new members or members without a "B" endorsement on their firearms licence must be under the direct (one on one) supervision of a member with a "B" endorsement on their firearms licence.

33.b.4. Pistols must be cased or holstered with rifles and shotguns covered, not carried in the hand, at all times when moving about the range, unless under the control of a Range Officer except as part of an action match.

33.b.5. Where a Safety zone has been declared, firearms may be cleaned, repaired or tested by cycling or dry firing ONLY in such zone. Ammunition or anything resembling ammunition including dummy or drill rounds is NOT PERMITTED TO BE HANDLED in any Safety zone UNDER ANY CIRCUMSTANCES.

34. Amendment to RSOs

- The shooting range operator must have prior approval from Police before making any change to the range standing orders that will or may affect the ballistic characteristics, operation, or safety of the range
- If there is significant change in conditions outside of the original certification, Police may review and issue an Improvement Notice which may require a renewal of certification depending on the change.
- Orders once "reviewed and approved" by NZ Police, the updated RSO's shall be displayed on the Club Notice board and forwarded to all users named on the distribution list.

35. Authorisation of RSOs

a) These Range Standing Orders are authorised by:

35.a.1. Cameron Haliday

35.a.2. Branch President

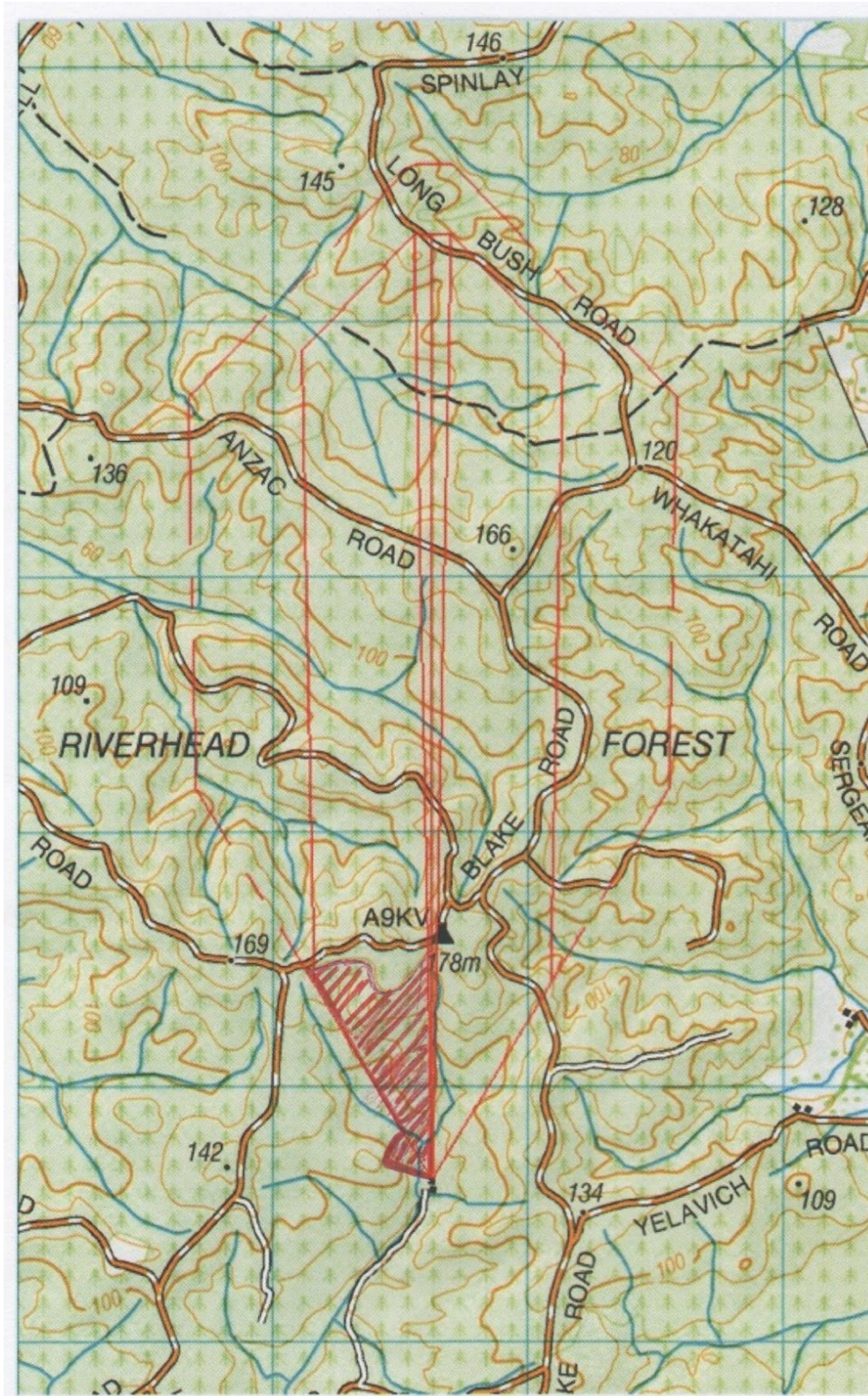
36. Distribution list

- a) All NZDA Auckland Branch members
- b) Omni Target Club committee
- c) Antique Arms Auckland Branch committee
- d) NZ Police Clubs and Ranges
- e) Landowner / leaseholder

f) Any other range users

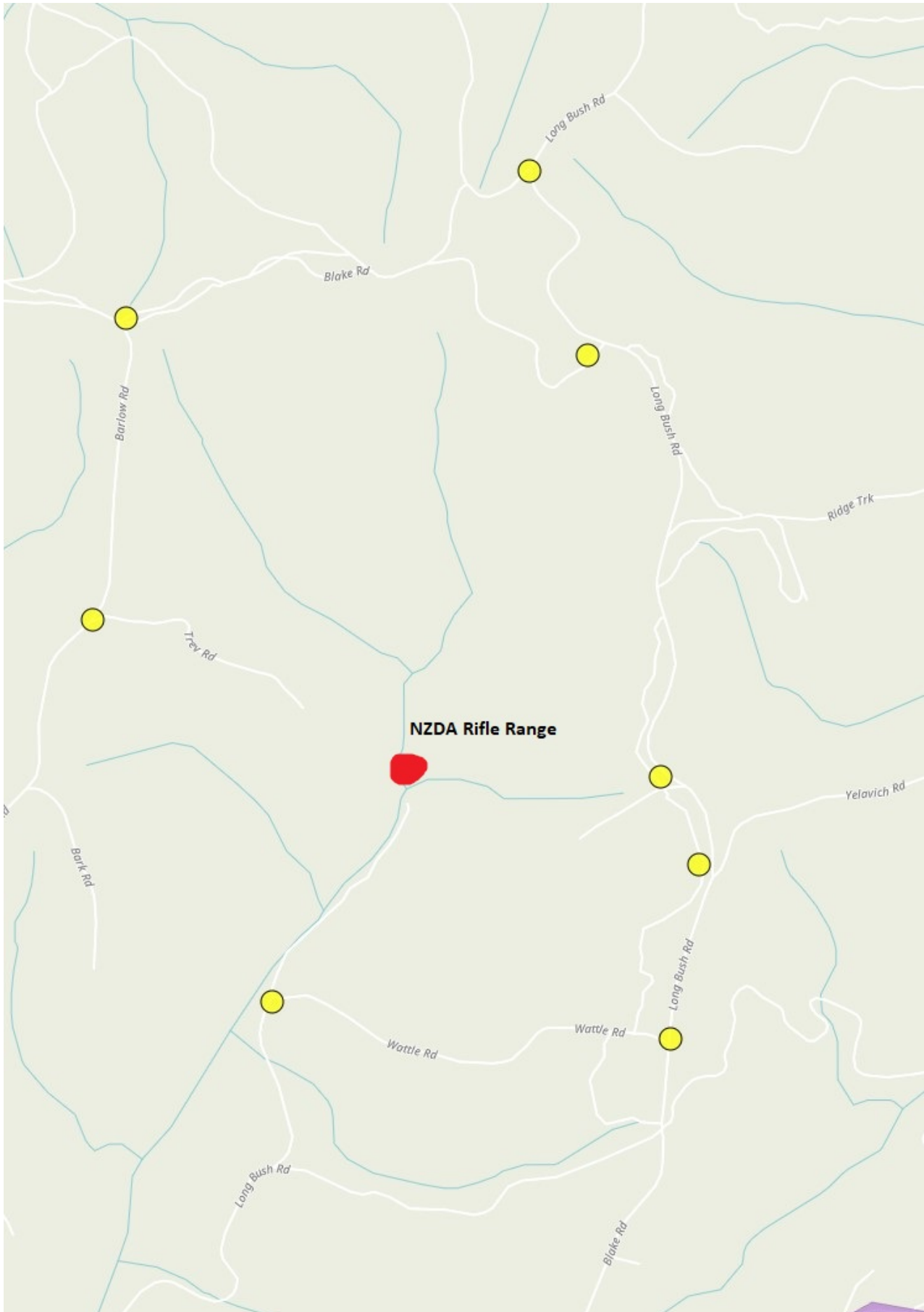
Annexe A

Range layout, location and direction of fire, showing Reduced Danger Area



Annex B:

Map showing location of warning signs:



TEMPLATES TABLE OF EQUIVALENCIES

Examples of Included

Calibre	Notes	Examples of Included
338 mm	T 7	338 Lapua Nosler Nosler Nosler PRN R10M Weatherby R100 Winchester Magnum W178 Weatherby Magnum W3M Nosler
The maximum muzzle energy for this class of ammunition is 5500Ft-lbs		
8 mm	T 6	308 Winchester Springfield Remington Max54r Max57licher-Schoenauer Max57R Max58R 6.5x58 6.5x58R Krag-Versey (8x57) 1870 Winchester Nosler Winchester
The maximum muzzle energy for this class of ammunition is 3250Ft-lbs		
		6.5x61 Nosler Nosler Max50r 6.5x52 Max53licher-Carcano Manlicher Savage Roberts Winchester B50 Remington Magnum Savage Muzzle Loader (Cast Bullet)